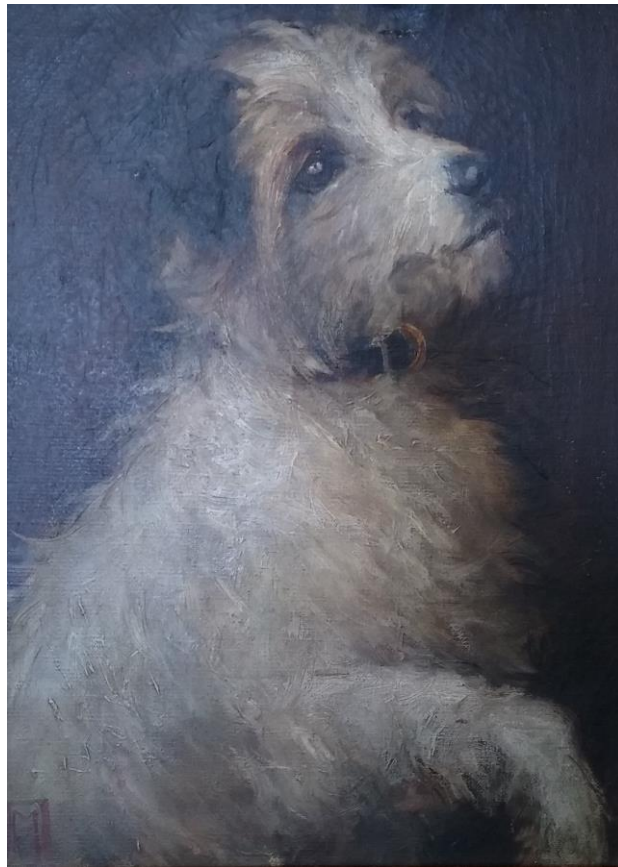


I AUCTION ROOMS

Tuesday 13th June 2023
Sale starts 10.30am



All lots subject to Buyers Premium of 23.5 inc VAT

The portrait of this terrier really looks out of the painting straight to a waiting customer. Over 600 lots of interest this week including longcase clocks, tools galore and look out for the plans for the Walt Disney concert hall – A Mickey Mouse company!!

We endeavour to offer a 24 hour warranty – look out for 😊

Goods sold as seen marked 😞

Lot No.	Description		
		16	2 Coleman folding camping chairs
1	BMW 118, 57 plate, petrol, 1995cc	17	Cast bench ends and back panel
2	Petter stationery engine	18	Cast bench ends and back panel
3	Cub Cadet petrol mower	19	2 deckchairs
4	Briggs & Stratton 675EXI petrol lawn mower	20	Platform steps
5	TX-159 petrol lawn mower	21	Quantity chicken wire and water pipe etc
6	Mountfield petrol lawn mower	22	Quantity beams
7	Mountfield petrol lawn mower	23	Quantity logs
8	Mongoose Hill Topper bicycle	24	Quantity firewood
9	Carrera bicycle	25	Child's Apollo bicycle
10	Quantity fence posts	26	Ilenga bicycle
11	Water butt	27	Malvern Cross bicycle
12	Sack barrow	27A	Elswick bicycle
13	Quantity wood	28	Carrera Vengeance bicycle
14	Galvanised planter and watering can	29	Apollo Desire bicycle
15	Pair of bench ends	30	Probike Classic bicycle
		31	Vintage ladies bicycle
		32	Vintage bicycle
		33	Viscount bicycle

- | | | | |
|----|--|----|--|
| 34 | Electroped bicycle | 55 | Loddon cattle weighing machine |
| 35 | Murray ride-on mower | 56 | Spirit can |
| 36 | Beach buggy | 57 | Vintage butler/belfast taps |
| 37 | Countax ride-on mower and accessories | 58 | T-squares, vice etc |
| 38 | Trailer | 59 | 2 leather bags of spanners |
| 39 | Ratchet straps, hook sets etc | 60 | Socket set etc |
| 40 | 2 trestle stands | 61 | Uwingarden petrol chainsaw |
| 41 | 2 cased tools | 62 | Cased socket set etc |
| 42 | Camping stove and stand | 63 | Carver g-clamp etc |
| 43 | Pair axle stands | 64 | Spanner set and fixings |
| 44 | Wire tensioners, g-clamps etc | 65 | Powerbase Xtreme 800w table saw |
| 45 | Mixed power tools | 66 | G-clamps and pulley wheels |
| 46 | Chisels etc | 67 | Bits and braces |
| 47 | Various saws | 68 | Pat tester |
| 48 | Sanding blocks etc | 69 | Titan petrol chainsaw |
| 49 | Bathroom scales and tools | 70 | Landrover Series 2 and 3 rear side seats |
| 50 | Various screws etc | 71 | Wooden handled screwdriver etc |
| 51 | Hand tools | 72 | Vintage blow lamps |
| 52 | Snap on sockets set etc | 73 | Scarifier |
| 53 | Mixed tools | 74 | Axe and mell |
| 54 | Hand held vacuum cleaner and 2 kettles | | |

75	Aluminium rake and broom	95	Garden rakes and hoes
76	Long handled shovel etc	96	Garden rakes and hoes
77	Pick axe and mattock	97	Long reach spade and hoes
78	Scissor spade	98	Long reach pruners
79	Parasol	99	Hoes and long reach garden fork
80	Seed sower and garden rake etc	100	2 garden sieves
81	Collar and heavy horse harness including chains etc	101	Gas heater, hacksaws and sockets
82	2 lawn edgers	102	2 spades and fork
83	Gardening items	103	Garden spades and fork
84	Scotts of Stow counter top oven etc	103A	Bundle hazel sticks
85	Garden groom and tile cutter	104	Petrol strimmer
86	2 car ramps	105	2 blacksmiths made hanging baskets
87	Plastering tools	106	Leather saddle and accessories
88	Garden grow tunnels etc	107	Leather quiver
89	Garden edging and tools	108	Quantity fishing rods
90	Mesh dog guard	109	Quantity fishing rods
91	Canon printer, Samsung tv - no remote	110	Fishing rod
92	Sebo vacuum	111	Quantity of fishing rods
93	Wire drain cleaner etc	112	Quantity of fishing rods
94	Scissor spade	113	Waders, size 7
		114	Fishing equipment

- | | | | |
|-----|--|------|---|
| 115 | Full bottle of Prices Energol motor oil SAE50 | 134 | Sealy double bed |
| 116 | Wooden turning stool | 135 | Bosch washing machine |
| 117 | 2 boxes Draper battery drill etc | 136 | Igenix microwave |
| 118 | Garden vac, Bosch electric strimmer, clock etc | 137 | Zanussi washing machine |
| 119 | 2 pedal bins, suitcase trolley, basket | 138 | Fridgemaster fridge freezer |
| 120 | 2 carpet runners, bathroom cabinet | 139 | Bush electric cooker |
| 121 | Red background rug | 140 | Beko washing machine |
| 122 | Open and stop safety gate | 141 | Framed pictures |
| 123 | Wallpaper steamer | 142 | Cd shelving |
| 124 | Vacuum | 143 | Companion set |
| 125 | Saw horse and stand | 144 | Pair of floor standing uplighters and 1 other |
| 126 | 4 wooden packing cases | 145 | Theodolite measure |
| 127 | Pressure washer | 146 | Metal trunk |
| 128 | Garden sprayers and drain rods | 147 | Left handed golf clubs and bag |
| 129 | Step ladder, ironing board, clothes airer | 147A | Electric radiator |
| 130 | 3 wooden packing cases | 148 | 2 vintage trunks |
| 131 | Garden tools | 149 | Camping chairs etc |
| 132 | Garden tools | 150 | Childrens golf bags, clubs and balls |
| 133 | Clothes rail | 151 | Golf clubs, bag and trolley |
| | | 152 | Camping table |
| | | 153 | Camping equipment |

- | | | | |
|-----|--------------------------------------|-----|--|
| 154 | Camping beds | 175 | Quantity floodlights |
| 155 | Step ladder | 176 | Clock radio and other electricals |
| 156 | 7 boxes kindling | 177 | Fixings etc |
| 157 | 2 bar stools | 178 | Cabling and compressor |
| 158 | Bosch fridge freezer | 179 | Ceiling lights etc |
| 159 | Folding table | 180 | Quantity ceramics |
| 160 | Black open shelving | 181 | 2 vintage suitcases |
| 161 | Rocking horse | 182 | Advertising crates |
| 162 | Metal based standard lamp | 183 | Wooden trunk |
| 163 | Wooden packing crate | 184 | Signed poppy print and 1 other |
| 164 | Pair white painted occasional tables | 185 | Quantity fishing rods and walking stick |
| 165 | Fish tank on cabinet and accessories | 186 | Vintage bottles |
| 166 | Bissell carpet cleaner | 187 | Black and white photographs |
| 167 | Flymo ultra glide electric mower | 188 | Kitchen scales and weights |
| 168 | Pressure washer | 189 | Quantity framed pictures |
| 169 | Loom style laundry bin and chair | 190 | Quantity LPs |
| 170 | Pine dresser | 191 | Fortnum & Mason picnic hamper and trolley bags |
| 171 | Tampener etc | 192 | Denby mugs and other dinner ware |
| 172 | 2 spirit levels etc | 193 | 2 boxes books |
| 173 | Golf bag and clubs | 194 | 2 boxes cameras and ceramics |
| 174 | Model railway track etc | | |

195	Flat packed storage boxes	215	4 steam railway prints
196	Spanners, clamps etc	216	Framed print
197	Chess and domino sets, jewellery and bags	217	2 framed pictures
198	Framed pictures	218	2 framed prints
199	Vintage tins and metal ware	219	Gilt framed mirror
200	Pop up book, yacht pattern etc	220	Framed print
201	Railway printing plate and date plates	221	Framed print
202	Military mascots etc	222	Framed print
203	4 storage carry cases and contents	223	Copper and brass bed warmer
204	Buffet host	224	2 sets of golf clubs and bags
205	Tank models	225	Wooden display boxes
206	Perspex display shelves	226	2 glass display cases
207	Quantity wiring	227	2 boxes cds
208	Model railway parts	228	2 reproduction signs
209	Tool box and 2 carry trays	229	Military ear defenders and shields
210	Plumbing equipment	230	Number plate bracket GWR HALL 6990 and BR STD 3
211	Model vehicles and railway parts	231	3 boxes castors
212	Fishing bag and reels etc	232	2 garden rakes
213	Alan Ingham print	233	Model railway wheels etc
214	Painted sign	234	Christmas lights
		235	Model figures and calendar etc

- 236 Patio gas burner and bottle
- 237 2 boxes LPs
- 238 2 boxes electric wiring and lights
- 239 Camping stove
- 240 2 boxes LPs
- 241 Quantity telephones etc
- 242 Fishing reels
- 243 Box LPs
- 244 Quantity vintage and other cycling clothing
- 245 Various posters
- 246 Delonghi electric radiator
- 247 Quantity LPs
- 248 Quantity model railway track
- 249 Electric stove
- 250 Glass display case
- 251 Bosch upright vacuum, a/f
- 252 Brass firescreen
- 253 Printing blocks
- 254 Nissan wing mirror and workshop storage trays
- 255 Carboy
- 256 Ammo box with electrical items
- 257 Hornby and model railway collector magazines
- 258 Roll of chicken wire
- 259 Commode, picture, occasional table
- 260 Sony hifi, speakers and Sherwood record player
- 261 HP laptop
- 262 Roadster guitar and 1 other
- 263 Bush tv and remote
- 264 Quantity sisal rope etc
- 265 Large wooden handled screwdriver, crow bars etc
- 266 2 boxes wiring
- 267 Dog chains, hanging baskets
- 268 Wooden trunk and small joiners tool box
- 269 3 fencing foils
- 270 Vintage fishing rod
- 271 LG tv and remote
- 272 Brother printer and ink
- 273 2 boxes books, fishing related
- 274 Quantity mirrors
- 275 Projector and slides

- | | | | |
|-----|---------------------------------------|-----|--|
| 276 | Pictures, annuals and books | 295 | Box LPs |
| 277 | 3 boxes cds and dvds | 296 | Dinky and other vehicles |
| 278 | 3 boxes ceramics and glass ware | 297 | Eddie Stobart collectable trucks |
| 279 | 2 boxes books | 298 | 3 framed pictures |
| 280 | 2 boxes glass ware | 299 | Glass ware |
| 281 | Quantity framed pictures | 300 | Table and desk lamps |
| 282 | Oriental ceramics | 301 | Box cds |
| 283 | Bow backed acoustic guitar and stand | 302 | 2 boxes tea and coffee pots |
| 284 | 2 boxes gift bags, leather gloves etc | 303 | 2 boxes mugs |
| 285 | Viners canteen of cutlery | 304 | Colclough part teaset |
| 286 | Cosmetics | 305 | Jugs and part teaset |
| 287 | Italian suede jacket | 306 | 2 boxes glass ware |
| 288 | Vintage books and cottage tea ware | 307 | 2 boxes vintage tins |
| 289 | Card games etc | 308 | 2 boxes cds |
| 290 | Vintage buttons etc | 309 | Martini glasses and elephant ornaments |
| 291 | Ringtons ceramics | 310 | Framed pictures |
| 292 | Glassware | 311 | 2 boxes books |
| 293 | Annuals and science fiction magazines | 312 | Boxed collectable vehicles |
| 294 | Crystal glass ware | 313 | Corgi boxed vehicles |
| | | 314 | Display model fishing boat |
| | | 315 | Clock mechanism |

- 316 Arthur Wood green vase
- 317 Green glass chemist bottles
- 318 Glass jug and glasses
- 319 4 silver coloured photo frames
- 320 Glass vases, vintage wooden tray etc
- 321 2 boxes blue tinted glassware
- 322 Grafton part teaset
- 323 Vintage Bells Scotch whisky bottle
- 324 Brass clock
- 325 Ceramic teapots
- 326 2 boxes Royal Doulton Rose Elegans dinner and tea ware
- 327 Quantity marbles
- 328 Quantity ornaments
- 329 Art glass letter openers
- 330 Vases and decanters
- 331 DAB Roberts radio and docking system
- 332 Spode and Wedgwood ceramic urn etc
- 333 Brass coloured table lamp
- 334 Table lamp with doves
- 335 Box books
- 336 Box LPs
- 337 Quantity cutlery, carving set etc
- 338 2 boxes Cashmere jumpers
- 339 Coalport Paddington in the Snow figure etc
- 340 Framed pictures
- 341 Studio glass ware
- 342 2 boxes cds
- 343 Le Creuset oven ware and Ninja juicer etc
- 344 2 boxes kitchen ware
- 345 Singer hand cranked sewing machine
- 346 Delta bread maker etc
- 347 Quantity cds
- 348 2 packing trays and glass bowls
- 349 Crystal ware and cutlery
- 350 Designer ladies belts etc
- 351 Soda syphon, glass fruit bowl etc
- 352 2 boxes Royal Worcester Evesham ware
- 353 2 boxes blue and white china including Adams pattern

- 354 Ceramic ornaments etc
- 355 Oriental vase and stand, ceramic animals
- 356 Zenit vintage camera etc
- 357 Royal Worcester Evesham ware
- 358 Brass candle holders, ceramic top hat etc
- 359 Quantity paperweights
- 360 Coloured glass decanters etc
- 361 OS maps
- 362 Part canteen of cutlery
- 363 2 Royal Worcester and 2 Coalport figurines
- 364 Box brownie and telephones
- 365 2 Wedgwood bowls, Sarah's Garden
- 366 Mixed metal ware
- 367 Noritake dinner ware, Glenwood
- 368 Box cds
- 369 2 boxes stoneware chemist bottles and ceramics
- 370 Studio glass ware
- 371 2 boxes ornaments
- 372 2 boxes books
- 373 Make-up bags
- 374 Hornsea part teaset, Tapestry
- 375 Child's swing and ceramics
- 376 Planters and glass jugs
- 377 Wash jug and bowl set, ceramics
- 378 Box cds
- 379 Singer sewing machine
- 380 Singer sewing machine
- 381 Quantity decanters
- 382 Part teaset
- 383 Royal Doulton part teaset, Autumn's Glory
- 384 Toy cars
- 385 Make-up bags
- 386 Barometer and candle holders etc
- 387 Figurines
- 388 Oriental tea ware
- 389 Decanters etc
- 390 Glass ware
- 391 'Knotmaster' log
- 392 Decanters and glass ware
- 393 Canteen of cutlery

- 394 Desk lamp
- 395 2 boxes blue and white dinner ware
- 396 2 plaques
- 397 Green glass display bottle
- 398 Commemorative cup and plate
- 399 Vintage cameras etc
- 400 Box cds
- 401 Mobile phones
- 402 Quantity marbles
- 403 Royal Albert dinner and tea ware, Trillium
- 404 Encyclopedia Britannica 11th Edition
- 405 Ornaments
- 406 Boxed collectors cars
- 407 2 boxes kitchen ware
- 408 2 teddy bears
- 409 2 boxes books
- 410 2 boxes dinner ware including Beswick butter dish
- 411 Collectors plates and native American pictures
- 412 2 boxes ceramics
- 413 2 boxes linen
- 414 3 boxes advertising mugs, teapots etc
- 415 2 boxes glass ware
- 416 Part teaset
- 417 3 boxes LPs
- 418 Picasso print
- 419 Matisse print
- 420 Ormolu clock
- 421 Ormolu clock
- 422 2 pairs binoculars
- 423 Bulk head clock, EE Sharp & Sons Ltd
- 424 2 ceramic dogs
- 425 4 Royal Doulton figurines
- 426 3 Royal Doulton Christmas figurines
- 427 Arts and Crafts trays
- 428 Quantity marbles
- 429 Serving platter, part teaset and glass ware
- 430 Decanter and glass ware
- 431 Bronze porthole

- 432 3 Royal Copenhagen animal figures
- 433 5 Lladro ornaments
- 434 Masons blue Mandalay bowls and plate
- 435 Blue tinted glass water jug and glasses
- 436 Decanter and 6 glasses
- 437 Apothecary bottles
- 438 4 Lladro figurines
- 439 4 Royal Worcester figurines
- 440 Pink Floyd LP, Dark Side of the Moon
- 441 Ronson lighters, military buttons, coins etc
- 442 Costume jewellery etc
- 443 Canteen of cutlery
- 444 Brass fire kerb
- 445 Mixed metal ware
- 446 Mixed metal ware
- 447 2 boxes books
- 448 2 boxes books
- 449 Box cds
- 450 Cased Singer sewing machine
- 451 Glass bowls, vases and paraffin lamp etc
- 452 Box LPs and cds
- 453 2 pencil sketches
- 454 2 architectural drawings of Chicago office tower
- 455 Oil painting, Newlyn Harbour, Jack R Mould
- 456 Quantity costume jewellery
- 457 2 tantalus
- 458 Quantity wristwatches
- 459 Mantle clock, figures
- 460 Silver frame
- 461 Pre-decimal coins
- 462 Postcards, biblical scenes
- 463 3 Lladro ornaments
- 464 Royal Mariner bulkhead clock and barometer display
- 465 Tarot cards
- 466 Jewellery box and contents
- 467 Glass vases
- 468 Omega watch etc
- 469 George Butler & Co carving set and silver spoons

- 470 3 Royal Doulton figurines
- 471 Vintage red telephone
- 472 Cigarette cards
- 473 3 Royal Doulton figurines
- 474 Quantity stamps
- 475 Brass ceiling light
- 476 Swatch watches
- 477 Bulkhead barometer
- 478 Bank notes
- 479 Figurine, Spirit of Ecstasy
- 480 Silver cutlery etc
- 481 Paraffin lamp
- 482 Desk top blotter and inkwell
- 483 Paperweights
- 484 3 Royal Doulton figurines
- 485 4 figurines
- 486 Oriental vase
- 487 2 Royal Doulton figurines
- 488 2 Royal Doulton figurines
- 489 Tribal stand
- 490 2 Royal Doulton figurines
- 491 3 Royal Doulton figurines
- 492 3 Royal Doulton figurines
- 493 4 Royal Doulton figurines
- 494 3 Royal Doulton figurines
- 495 Royal Doulton figure The Boatman
- 496 Royal Doulton figure Nanny
- 497 Royal Doulton figure A Good Catch
- 498 2 Lladro ornaments, clowns
- 499 Collection of medals
- 500 Silver stone dishes and brandy glass warmer
- 501 2 silver posy holders and 2 candle holders
- 502 Silver nib brush, pencil and inkwells
- 503 Silver teether, egg cup, crochet hook etc
- 504 Bronze bulldog
- 505 Bronze bulldog
- 506 Lovers kiss ornament
- 507 2 Omega and Mappin & Webb wristwatches
- 508 Pistol

- 509 Omega ladies wristwatch and others
- 510 Bust of a young girl
- 511 6 mouseman napkin rings
- 512 Silver vesta case and articulated vesta case
- 513 Wristwatches
- 514 Swiss made watch and silver stand
- 515 Figurine of a lady
- 516 Jewellery box and contents
- 517 Jewellery box and contents
- 518 Anchor lantern
- 519 Lakeland photograph
- 520 4 Abrahams black and white framed photographs
- 521 Sword
- 522 Gilt framed study of a canine
- 523 Watercolour, lady
- 524 Gilt framed study of a boy
- 525 2 gilt framed watercolours
- 526 Crook and walking sticks
- 527 Inlaid mirror
- 528 Stick barometer
- 529 Barometer
- 530 Wimbledon print
- 531 Arts and Crafts copper charger
- 532 2 framed Abrahams black and white photographs, Lake District
- 533 Decorative Victorian carving
- 534 2 Ernest Willbourn frameless pictures
- 535 2 framed pictures
- 536 Signed print, Sue Willis
- 537 Signed print, Sue Willis
- 538 Marquetry picture
- 539 Metropolitan flowers, framed print
- 540 Barometer
- 541 Gilt framed oil, canine
- 542 Brass faced longcase clock
- 543 Ceramic faced longcase clock
- 544 2 vintage Bergere chairs
- 545 4 oak hall chairs
- 546 4 architectural scale model drawings, Walt Disney Concert Hall, Los Angeles

- 547 2 pine wardrobes
- 548 Pine wardrobe
- 549 Pine chest of drawers and 2 bedside cabinets
- 550 Modern mirror
- 551 Floor standing lamp
- 552 Corner cupboard
- 553 Court cupboard
- 554 Pine dressing table
- 555 Pine desk
- 556 Stag chest of drawers
- 557 2 floor standing spotlights
- 558 White chest of drawers
- 559 Dressing table mirror
- 560 White painted drawers
- 561 Shipping trunk
- 562 Bookcase
- 563 Chest of drawers
- 564 Sheet music cabinet
- 565 Bureau
- 566 Vintage folding screen with mirror
- 567 Display cabinet
- 568 Modern display cabinet
- 569 Black finished hall table
- 570 Modern oak sideboard
- 571 Black finished bookshelves with drawers
- 572 Glass nest of 3 tables and 2 others
- 573 Modern oak chest of drawers
- 574 Bookshelves
- 575 Magazine rack
- 576 Mid century dining table and 6 chairs
- 577 Articulated fire screen and oak panel
- 578 Oak table
- 579 Loom style laundry basket
- 580 Nest of 3 tables
- 581 Stool
- 582 Mid century nest of 3 tables
- 583 Vintage crib on castors
- 584 Camel saddle
- 585 Stool
- 586 Occasional table with drawer

- | | | | |
|-----|--|-----|--|
| 587 | Black finished iron magazine rack | 607 | Coffee table |
| 588 | Piano stool | 608 | Dining table and 4 chairs |
| 589 | Vintage oak chair | 609 | Mid century coffee table |
| 590 | 3 stools | 610 | Pine chest of drawers |
| 591 | Folding cake stand | 611 | Georgian batchelor's chest of drawers |
| 592 | Canework topped stool | 612 | Oak chest of drawers |
| 593 | Wooden plant stand | 613 | Walnut veneered desk |
| 594 | Dumb waiter | 614 | Tripod standard lamp |
| 595 | Leather pouffe | 615 | China cabinet |
| 596 | Glass tv stand | 616 | Pine cheval mirror with drawer |
| 597 | Chest of drawers and 2 bedside cabinets | 617 | Mid century telephone table |
| 598 | Dining table and 4 chairs | 618 | Sideboard |
| 599 | 2 seater leather sofa | 619 | Ercol dropleaf dining table and 4 chairs |
| 600 | Black leather Parker Knoll 2 seater sofa | 620 | Chest of drawers |
| 601 | Painted sideboard | 621 | Open armchair |
| 602 | Radiogram | 622 | Open armchair |
| 603 | 2 green upholstered armchairs | 624 | Hall chair |
| 604 | Stressless blue leather armchair and stool | 625 | 5 dining chairs and 1 carver |
| 605 | Inlaid nest of 3 tables | 626 | 3 piece suite |
| 606 | Demi lune table | 627 | 6 dining chairs |
| | | 628 | Footstool |

629 3 seater sofa and chair

630 Oak hall chair

631 4 oak dining chairs

632 Ercol armchairs and footstool

633 3 seater sofa, a/f

634 Sofa

635 Conservatory chair

636 Corner sofa and reclining chair

H&H GROUP OF COMPANIES



Borderway, Rosehill, Carlisle, Cumbria CA1 2RS
T. 01228 406200 | E. info@borderway.com
Also operating Marts at:
Broughton-in-Furness, Kirkby Stephen, Lazonby,
Lockerbie, Middleton-in-Teesdale, Newcastleton,
Newtown St Boswells and Wooler
harrisonandhetherington.co.uk



Borderway, Rosehill, Carlisle, Cumbria CA1 2RS
T. 01228 406260 | E. info@hhlandestates.co.uk
Also at: Carlisle City, Cockermouth, Durham,
Grange-over-Sands, Keswick, Kendal,
Newtown St Boswells and Penrith
hhlandestates.co.uk



The Auction Centre, Rosehill, Carlisle, Cumbria CA1 2RS
T. 01228 406320 | E. enquiries@hhauctionrooms.co.uk
A Trading Name of Harrison & Hetherington
hhauctionrooms.co.uk



Southend Road, Penrith, Cumbria CA11 8JH
T. 01768 864214 | E. print@hhreeds.co.uk
Also at: Carlisle
hhreeds.co.uk



Borderway, Rosehill, Carlisle, Cumbria CA1 2RS
T. 01228 406290 | E. info@hhib.co.uk
Also at: Durham, Newtown St Boswells and Ruthin
hhinsurancebrokers.co.uk

First in the Field...

Borderway, Rosehill, Carlisle, Cumbria CA1 2RS | T. 01228 406330 | E. info@hhgroupplc.co.uk

hhgroupplc.co.uk